

MACHINING CAPABILITIES

Fluorocarbon are pleased to announce, we now have a much larger capacity for Machined components and Seals.

Offering a comprehensive range of high-performance plastic machining capabilities ranging from PTFE, PEEK, PFA, FEP and Nylons, to Ferrous and Non-Ferrous metals and other specialist materials.

We can provide the flexibility of manufacturing one off development prototype components to volume production batches.

We have two facilities in Romania and Manchester, which hold a variety of machines and tooling to support the polymer and metal machining of customer requirements, from conventional machining to CNC machining to Milling, Turning and Grinding.

TURNING

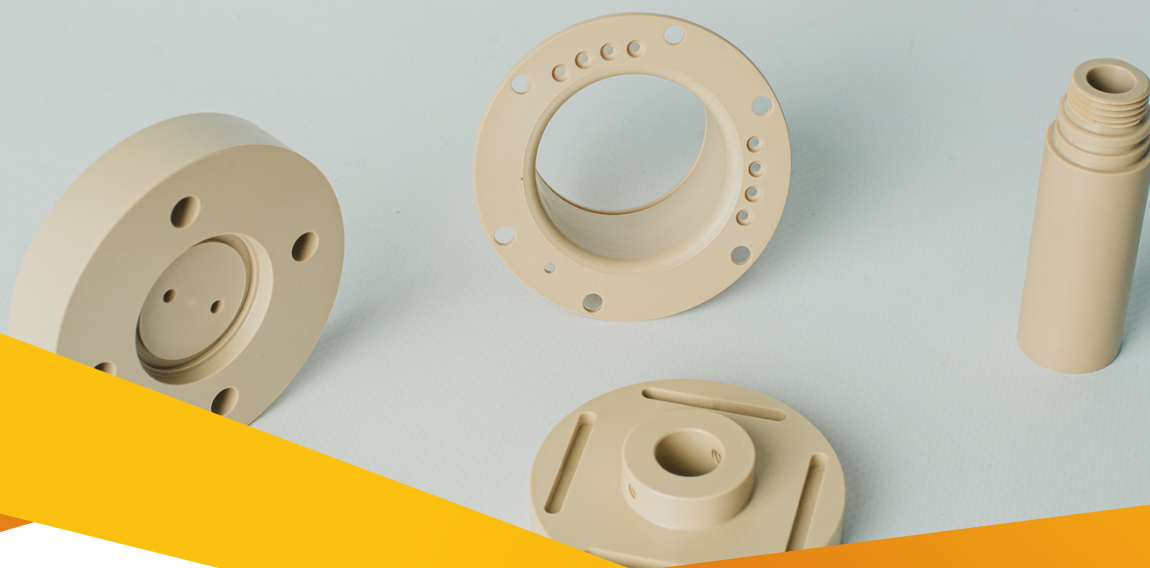
The turning department holds several lathes from conventional machines including CNC lathes with bar feeders to support volume production to lathes with live tooling and 5-axis, to support the manufacture of cost-effective turned/milled components. With capabilities from 2mm to over 1500mm, we offer 3D milling that is supported by the latest CAD/CAM connectivity.

MILLING

The milling department has the capability of machining both simple and complex components on its CNC 5-axis machines and vertical centres, with the ability of machining relatively small components to large and complex shape components covering a range up to **1300** mm x 650mm. (see table for full range)

ASSEMBLY CAPABILITIES

The manufacturing department not only has the capability to machine components to drawing but can also provide a service of assembling machined components into sub-assemblies or final assemblies to support customer requirements.



OTHER CAPABILITIES

GRINDING

We offer grinding services, providing a high surface quality and narrow tolerances, which produce round rods that are easily further processed and are suitable for continuous production processes.

DE-BURRING

We provide a de-burring service, eliminating the flash that can remain after milling, grinding, or turning. De-burring improves the quality of the surface of finished components.

Our products are inspected using the latest models of 3D coordinate measurement machines and Visio equipments which can give you a fully dimensional report by scanning the product.

PRODUCT DESIGN & CAM-CAD SOLUTIONS

With a lot of experience in the market we can offer you other services such as: Product Design and modelling using CAM software for simulating the product and generating the program for any type of CNC. Our engineers can give you the proper solution for your application.



Find out how Fluorocarbon can help your company improve efficiency and save money!

email: info@fluorocarbon.co.uk

or call us on 0845 2505 100



#	Name / Description of the equipment	Size capabilities DIA		Size capabilities Length		Location
		Min	Max	Min	Max	
1	DOOSAN LYNX 220LM CNC (X, Z & C-axis)	1 mm	250 mm	1 mm	550 mm	ROMANIA
2	TORNADO 80 CNC (X, Z axis)	1 mm	170 mm	1 mm	350 mm	ROMANIA
3	TORNADO 10 CNC (X, Z axis)	5 mm	360 mm	1 mm	600 mm	ROMANIA
4	TORNADO 210 CNC (X, Z axis)	3 mm	250 mm	1 mm	500 mm	ROMANIA
5	DOOSAN LYNX 220B CNC (X, Z axis)	1 mm	320 mm	1 mm	600mm	ROMANIA
6	DOOSAN LYNX 220B CNC (X, Z axis)	1 mm	320 mm	1 mm	600mm	ROMANIA
7	BINNS & BERRY 1 CNC (X, Z axis)	100 mm	1500 mm	1 mm	1500 mm	ROMANIA
8	BINNS & BERRY 2 CNC (X, Z axis)	50 mm	700 mm	1 mm	2500 mm	ROMANIA
9	MULTITURN 4000 CNC (X, Z axis)	10 mm	600 mm	1 mm	4500 mm	ROMANIA
10	DOOSAN PUMA 280 M CNC (X, Z & C-axis)	5 mm	400 mm	1 mm	610 mm	ROMANIA
11	TORNADO T8M (X, Z & C-axis)	2 mm	290 mm	1 mm	490 mm	ROMANIA
12	TORNADO T8MSY (X, Y, Z & C-axis)	2 mm	290 mm	1 mm	490 mm	ROMANIA
13	HURCO VMX42 (4-axis)	N/A	N/A	10 mm	1050 mm	ROMANIA
14	TORNADO T4 (X, Z axis)	1 mm	230 mm	1 mm	460 mm	ROMANIA
15	TORNOS DECO 26A CNC SLIDING HEAD 10-axis	5 mm	32 mm	1 mm	50 mm	ROMANIA
16	DOOSAN LYNX 220G SUPER CNC (X, Z axis)	1 mm	250 mm	1 mm	320 mm	ROMANIA
17	STROHM 25 CAM-AUTO	3 mm	25 mm	1 mm	50 mm	ROMANIA
18	VERTICAL BORER (X & Z Axis)	50 mm	1200 mm	1 mm	500 mm	ROMANIA
19	MANUAL LATHE (X & Z Axis)	3 mm	450 mm	1 mm	850 mm	ROMANIA
20	MANUAL LATHE (X & Z Axis)	3 mm	270 mm	1 mm	650 mm	ROMANIA
21	MANUAL LATHE (X & Z Axis)	3 mm	200 mm	1 mm	650 mm	ROMANIA
22	MANUAL LATHE (X & Z Axis)	3 mm	320 mm	1 mm	750 mm	ROMANIA
23	MANUAL MILL (X, Y & X axis)	N/A	N/A	1 mm	750 mm	ROMANIA
24	CNC MILL (X, Y & X axis)	N/A	N/A	1 mm	750 mm	ROMANIA
25	CNC MILL (X, Y & X axis)	N/A	N/A	1 mm	750 mm	ROMANIA
26	DOOSAN LYNX 220LM CNC (X, Z & C-axis)	1 mm	250 mm	1 mm	550 mm	MANCHESTER
27	DOOSAN PUMA 2600M (X, Z & C axis)	3 mm	376 mm	1 mm	760 mm	MANCHESTER
28	LYNX 2100B CNC LATHE (X & Z axis)	1 mm	350 mm	1 mm	330 mm	MANCHESTER
29	PUMA GT2100 (X & Z axis)	3 mm	300 mm	1 mm	550 mm	MANCHESTER
30	PUMA 2600SY II CNC LATHE 5-axis (X, Y, Z, B & C axis)	2 mm	376 mm	1 mm	830 mm	MANCHESTER
31	DNM 6700 VERTICAL MACHINING CENTER (4th axis)	N/A	N/A	10 mm	1300 mm	MANCHESTER
32	MANUAL LATHE (X & Z axis)	3 mm	200 mm	1 mm	650 mm	MANCHESTER
33	MANUAL LATHE (X & Z Axis)	3 mm	320 mm	1 mm	750 mm	MANCHESTER
34	MANUAL MILL (X, Y & X axis)	N/A	N/A	1 mm	750 mm	MANCHESTER